

City Manager's

Weekly Update – August 30, 2019

City News You Need to Know

Missing Person Investigation

Belmont Police, along with San Mateo County Office of Emergency Services and Search & Rescue teams, conducted an extensive search earlier this week for Missing Person Paul Farmer of Belmont. The investigation into his whereabouts are still being investigated by Belmont Police.



Coffee with a Cop!

Join Belmont Police and the Belmont Chamber of Commerce for a free cup of coffee, Tuesday (9/2) morning from 7:30am to 9:00am.



HIGHLIGHTS

Reminders:

September 2 Labor Day – City Hall Closed
September 3 Planning Commission Meeting
September 4 Park & Rec Commission Meeting
September 10 City Council Meeting

In Today's Issue

Missing Person Investigation
Coffee with a Cop
Belmont Sales History – Q2 2019 Summary
Message from Belmont's Adopt a Unit
Barrett Off Leash Hours End
Disaster Preparedness Day
Belmont Community Center Outreach
Project Updates/Traffic Advisories
Recreation Updates and Programs
Community Safety Programs
Employment Opportunities
Documentary Screening – Too Soon to Forget
Movies in the Park – Now playing, Come Join Us

Coming Soon

Annual California Coastal Cleanup Day
Belmont Water Dog Run

#dineBelmont- McDonald's

Calendars

Connect with Us

Belmont Sales History – Q2 2019 Summary

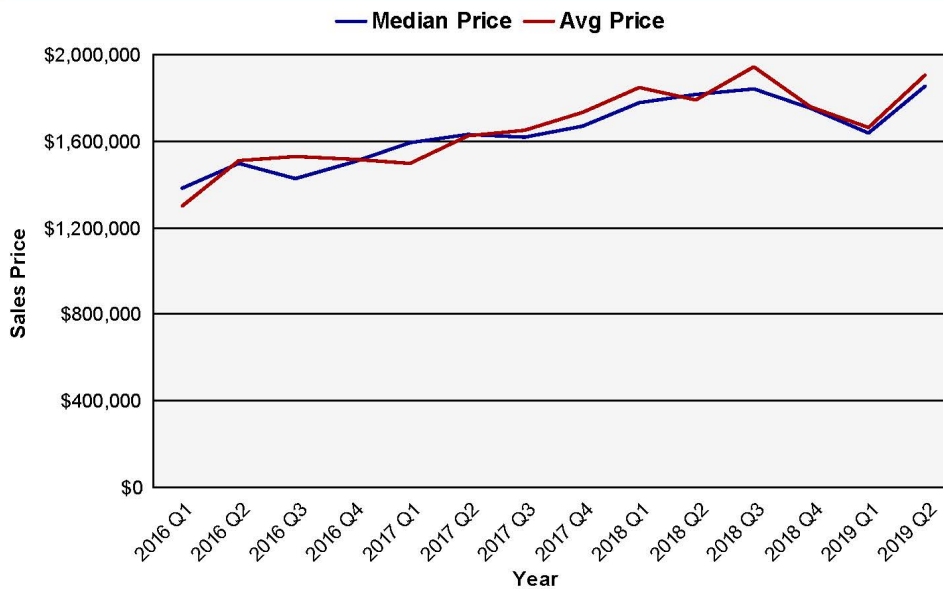
The City's revenue consultant, HdL, has provided the attached summary of historical property sales values, including results for 2019 Q2. Specifically, the City's median price increased by 12.84% for Q2. The summary includes more detail on Belmont's sales value trends over the past several years.



THE CITY OF BELMONT SALES VALUE HISTORY

Detached Single Family Residential Full Value Sales (01/01/2016 - 6/30/2019)

Year	Full Value Sales	Average Price	Median Price	Median % Change
2016 Q1	34	\$1,297,412	\$1,381,500	
2016 Q2	69	\$1,507,217	\$1,500,000	8.58%
2016 Q3	58	\$1,526,069	\$1,425,000	-5.00%
2016 Q4	58	\$1,517,414	\$1,503,500	5.51%
2017 Q1	38	\$1,498,921	\$1,590,000	5.75%
2017 Q2	70	\$1,621,864	\$1,630,000	2.52%
2017 Q3	66	\$1,650,470	\$1,617,500	-0.77%
2017 Q4	66	\$1,730,712	\$1,670,000	3.25%
2018 Q1	36	\$1,845,014	\$1,780,000	6.59%
2018 Q2	60	\$1,790,742	\$1,817,000	2.08%
2018 Q3	59	\$1,941,042	\$1,840,000	1.27%
2018 Q4	53	\$1,757,632	\$1,750,000	-4.89%
2019 Q1	37	\$1,661,467	\$1,640,000	-6.29%
2019 Q2	34	\$1,902,809	\$1,850,500	12.84%



*Sales not included in the analysis are quitclaim deeds, trust transfers, timeshares, and partial sales.

Data Source: San Mateo County Recorder

This report is not to be used in support of debt issuance or continuing disclosure statements without the written consent of HdL, Coren & Cone

Prepared On 8/23/2019 By MV

Message from Belmont's Adopt a Unit

A thank you video can be viewed at this [link](#) from our troops overseas. Take a look at a day in the life of a soldier. **Support the 101st Airborne I-327th Infantry C Company** visit <https://www.belmont.gov/our-city/community-partners/adopt-a-unit-program>



Community Events and Input Opportunities

Belmont Community Center Conceptual Design Project Outreach

Just a few more days to provide your input! Please take a moment to complete our [survey](#) about the program and site options currently being considered. Want to learn what's been done on this project so far? Join us or watch next Tuesday's City Council meeting live! Additional community center project information is available [online](#). Please email communitycenter@belmont.gov with any questions.



REMINDER: Barrett Off Leash Hours End

Evening Off-Leash Hours at Barrett Park ended on August 22nd. Morning off-leash hours from dawn until 8:30am will continue through November 30th Thank you for your cooperation.

PROJECT UPDATES



Ralston Avenue Corridor Improvement Project Segments 1 and 2

The pavement dig outs were completed this week and the main slurry seal work has been completed. The new road surface will be getting restriped in the coming weeks. New trees were planted along Ralston Avenue between 6th Ave and El Camino Real.



Pedestrian improvements are being worked on at the corner of Emmett St and 6th Ave. Two drive-ways were replaced, and ADA compliant curb ramps were installed. The new bike path through Twin Pines Park is still under construction, but the grading has been completed.

2019 Pavement Maintenance Project – Phase I, CCN 2019-577 (Measure I)

Overlay resurfacing has been completed on Bayview Avenue, Belle Monti Avenue, Lyall Way, Ponce Avenue, and Kimmie Court.

Within the upcoming weeks, utility lids will be repaired, and striping at the intersections will be replaced.

Temporary street closures are anticipated during striping work and utility lid repairs. Flaggers will be onsite to enable through traffic.

For any concerns, please contact the Public Works Department at 650-595-7425.

More information and updates can be found on the Project webpage here:

<https://www.belmont.gov/Home/Components/FacilityDirectory/FacilityDirectory/417/696>

Further information on the City's Street Improvement Program can be found here: www.belmont.gov/BelmontPavement



2019 Storm and Sewer Repair Project, CCN 2019-581)

The 2019 Storm and Sewer Repair Project has begun on Ruth Ave along Malcolm Avenue.

The contractor is scheduled to move towards sewer and storm lines in the following order of streets:

- Fairway Drive
- Coronet Blvd
- Coronet Blvd near Ewell Rd
- Continentals Way
- Semeria Avenue
- Lincoln Avenue
- San Ardo Way

A notice from the City and a notice from the Contractor will be sent out to residents within the vicinity of the construction work as scheduled work approaches.

As some roadway will be trenched, the road will need to be closed to through traffic in both directions during working hours. No overnight road closure will take place. No parking will be allowed during full road closure.

Single lane closures will be required at some locations during working hours. No parking will be allowed on closed side of the street. Through traffic and driveway access will be maintained when possible. If you have any special access needs during the pavement operations, please contact us for accommodations. Please note the time, date, and location of the Temporary No Parking on the street and plan to park accordingly. The Temporary No Parking signs will contain the most updated parking restriction information.

For any concerns, please contact the Public Works Department at 650-595-7425.

More information and updates can be found on the Project webpage here:

<https://www.belmont.gov/Home/Components/FacilityDirectory/FacilityDirectory/419/696>



TRAFFIC ADVISORIES

Mid-Peninsula Water Main Project
September 3rd – September 6th
8:00 AM – 4:30 PM

The contractor will continue to excavate a trench to install an 8" water line. The work will take place north of North Avenue near 1606 Notre Dame Avenue. Traffic control will be in place.

A TASTE OF INDIA

Twin Pines Senior and Community Center volunteer Indira Patel cooked up an authentic Northern (Gujarati) Indian meal in celebration of India's 72nd Independence Day. Sixty people gathered together for the feast. For some, it was their first time experiencing Indian food, and they were delighted to experience A Taste of India.



Be a Part of the Community Join our Programs

YAC & VOICES Recruitment

Belmont's Youth Advisory Committee (YAC) and Volunteer Outreach Involvement Community Events & Services (VOICES) groups are accepting applications for the 2019-2020 school year. Each group has a unique mission to facilitate making a difference in the community. Learn more [here](#).

JOIN THE YOUTH ADVISORY COMMITTEE TODAY!

Are you a middle school or high school student who wants to improve Belmont?
Do you want to make a difference in the teen community? If so, then apply today!

The Youth Advisory Committee (YAC) serves as the teen perspective on real-life issues facing the City of Belmont. The YAC allows teens to work directly with adults while remaining focused on increasing civic engagement in Belmont. The YAC is for students (of any school) who want to get involved in local government, socialize and debate hot topics, and who want to better prepare themselves for college and life beyond.






The YAC meets twice a month during the school year to discuss current events and plan future projects. Meetings are a great way for members to have their voices heard and build friendships with fellow members.

Apply today online at www.belmont.gov/youthteens

VOLUNTEER OUTREACH INVOLVEMENT COMMUNITY EVENTS SERVICES





VOICES is a community services group of high school students. This is the perfect opportunity to meet new friends and expand your network, all while giving back to your community. If you are someone who wants to make a difference, then VOICES is the program for you!

Past Projects Include:

- COASTAL CLEAN UP - We conduct clean ups in and around Belmont Twin Pines Park.
- SAMARITAN HOUSE - We read books to children and interact with those who are staying at local shelter homes.
- SECOND HARVEST FOOD BANK - We sort canned foods and other food items that will be donated to the local residents of the San Mateo County community.
- BABY BLANKETS - We create baby blankets that will be donated to a local hospital for infants in need.
- SENIOR TALENT SHOW - We perform acts of talent such as singing and dancing for the local Aging Adult community.
- KEEN SF YMCA - We interact and play sports with participants who have disabilities.

AND MUCH MORE!

Apply today online at www.belmont.gov/youthteens

Movies in the Park

Summer movie Nights are now playing grab a blanket or lawn chair and join us Fridays thru September!

BELMONT PARKS & RECREATION PRESENTS

MOVIES IN THE PARK

Twin Pines Park, Meadow Stage | Bring chairs & blankets
Raffle: 6:50PM | Movie: Dusk



AUGUST 23



SEPTEMBER 13



SEPTEMBER 20



SEPTEMBER 28,
SATURDAY
AT BARRETT
COMMUNITY
CENTER

Sponsored by:





Parks & Rec employment opportunities

On the City's Website for more info.

PARTY TIME

**CITY OF BELMONT
PARKS & RECREATION IS
HIRING!**

**LOOKING FOR A FUN, FLEXIBLE,
JOB THIS SUMMER?**

JOIN THE BUILDING ATTENDANT TEAM!
PAY RATE: \$14.18-\$18.95
(WITH \$1.00 DIFFERENTIAL ON WEEKENDS)
APPLY TODAY AT
WWW.BELMONT.GOV/JOBS

JOIN US FOR A FREE SCREENING OF

TOO SOON TO FORGET

*A New Documentary on
Younger Onset Alzheimer's*

**THURSDAY, AUGUST 22 AT 1:30PM &
TUESDAY, AUGUST 27 AT 6:00PM**

**BURLINGAME RECREATION CENTER
850 BURLINGAME AVE.**

KINDLY RSVP TO: 650-558-7300

Question and Answer Session to follow film screening
with Catholic Charities Aging Support Services staff

YOU'RE INVITED

Memory Cafe

A Social Gathering for those with
Memory Loss and their Care Partner

Enjoy time for socializing, refreshments,
and an activity, if you choose

**SEPTEMBER 4 - MEET & GREET
OCTOBER 2 - CHAIR YOGA
NOVEMBER 6 - MUSIC & MEMORY
DECEMBER 4 - PHOTO SHARING**

**FIRST WEDNESDAY OF THE MONTH, 2:00-4:00 PM
TROUSDALE WELLNESS CENTER
1875 TROUSDALE DRIVE, BURLINGAME**

Call the Burlingame Recreation Center
for More Information or to RSVP: 650-558-7300



Memory Café and Too Soon to Forget Film Screening in Burlingame.

Burlingame Parks and Rec and Peninsula Healthcare District are showing the film “Too Soon to Forget” a documentary about younger onset of Alzheimer’s. A Memory Café will also be opening soon to offer a monthly social gathering for adults with memory loss and their caregivers.

Commonly Asked Questions

What is a Memory Café?

A Memory Cafe is a wonderfully welcoming place for individuals with Alzheimer’s or any type of the dementias. The challenges of living with memory loss can sever social connection at a time when it is needed most. Across the country, Memory Café gatherings are one way people with memory loss and their care partners are coming together to make new friendships and support one another. A Memory Café is a safe and comfortable space where care partners and their loved ones can socialize, listen to music, play games, and enjoy other appropriate activities. You can simply enjoy the company of those with similar things in common.

Who should attend a Memory Café?

Memory Cafes are intended for those with mild to moderate Alzheimer’s, Dementia, or other memory loss, along with their care partner. While a Memory Café is beneficial to those afflicted, it is also beneficial for their care partners as well. It is not a place to “drop off” your loved one for a while, but a way to enjoy activities with them as a break from the normal routine in safe and comfortable environment.

Is this a support group?

In short, no this is not a support group. Support groups are typically solely for caregivers and focus on sharing experiences and learning to cope with a challenge they are facing. While it is very likely that the Memory Café will become a supportive community, that is not the main purpose of the program.

What will a typical Memory Café be like?

The Memory Café will be a warm, welcoming environment. There will be ample time for meeting others and getting to know one another. Light refreshments and snacks will be provided. There will also be an activity appropriate for the attendees, which will be optional. Professionals from Catholic Charities Aging Support Services will facilitate each café gathering and be able to provide resources.

What kind of activities are planned?

Activities will be varied and could include art, music, photo sharing, movement/exercise, holiday celebrations, or games. We encourage you to come even if the activity may not be of interest—the activity is just one portion of the afternoon, and you might be pleasantly surprised if you do choose to give it a try. As the group develops, we will ask you which types of activities you prefer and we will plan accordingly.

Do I need to sign up? How much does it cost?

We ask that you RSVP, but it is not required to attend. The program is free thanks to the support of the Peninsula Health Care District, with assistance from the partner organizations Burlingame Parks and Recreation and Catholic Charities.

RSVPs can be made by calling the Burlingame Recreation Center at 650-558-7300.

Public Safety Invites you to Participate in these Upcoming Events



SOFTBALL CHALLENGE

SUNDAY SEPT. 15 2019 12:00 PM

BELMONT & REDWOOD SHORES ROTARY CLUB PRESENTS

BATTLE OF THE BADGES POLICE VS FIRE

FOOD | FAMILY | FUN!

BELMONT SPORTS COMPLEX 550 Island Pkwy, Belmont, CA 94002

15TH ANNUAL SAN MATEO COUNTY

DISASTER PREPAREDNESS DAY

SATURDAY SEPTEMBER 21, 2019
10 AM - 2 PM
SAN MATEO EVENT CENTER

A family friendly event where you can: explore fire trucks, SWAT & other emergency response vehicles, enter into the Smoky Hall & Shake House, see Bomb Squad Robots, attend classes on CPR, First Aid & more, learn about school & community safety resources, & come home with essential supplies.

FOOD AND EVENT FREE, \$15 PARKING

For more information go to: smcdisasterprep.org

And More Events to Mark on your Calendar

For More Information look here:

Save the Music:

<https://schoolforce.org/events/save-the-music/>

Belmont Water Dog Run:

<https://belmontwaterdogrun.com/>

**CALIFORNIA
COASTAL
CLEANUP
DAY**

Check-in begins at 8:30 AM at the front entrance of City Hall, One Twin Pines Lane

Trash and recycle collecting supplies will be provided. Volunteers are encouraged to bring their own gloves, buckets, bags, etc.

**SATURDAY
SEPTEMBER 21ST
9AM TO NOON**

For more information/early registration call (650) 595-7425

FIND YOUR CLEANUP SITE ON COASTALCLEANUPDAY.ORG

**THE BELMONT
WATER DOG RUN**

10 . 12 . 19

ARE YOU READY?

McDonald's

#mcdonalds #burgers #fries #goldenarches
 522 El Camino Real, Belmont Contact: (650) 592-6833
 Mon-Sun: 5 am - 1 am



KEEPING IT BELMONT RESTAURANT OF THE WEEK
 #dinebelmont



post photos with your favorite items
 using #dinebelmont on social media

ENJOY and follow us NOW for more restaurants of the week and general information on Belmont restaurants

#dinebelmont and @dinebelmont



#dinebelmont

New Weather Webpage Gauges Potential for Need to Call a Public Safety Power Shutoff

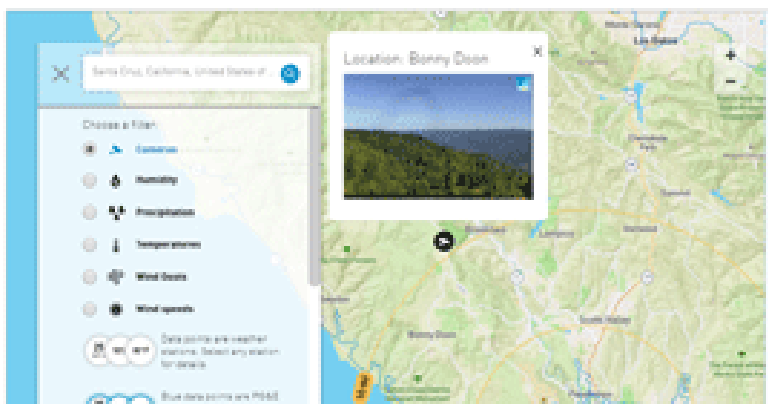
As part of its efforts to prepare customers and communities for the growing threat of wildfire, PG&E has launched a robust [weather webpage](#) on pge.com, providing detailed, localized forecasts.

Of special note, the page offers a seven-day, look-ahead regional forecast updated daily by a PG&E meteorologist or fire scientist that indicates the potential need to call a Public Safety Power Shutoff (PSPS). PG&E monitors conditions across our system and evaluates whether to proactively turn off electric power lines, in the interest of public safety, if gusty winds and dry conditions, combined with a heightened fire risk, threaten a portion of the electric system.

PG&E weather map

Information is provided by weather stations or cameras throughout PG&E's service territory. Note that weather stations vary in the type of information collected (i.e., some may report wind only, while another may report humidity, temperature, wind speed and more). Also, each weather station includes its own information (mapping).

LEARN HOW TO USE THE WEATHER MAP



PG&E's new weather web page includes the ability to access dozens of high-definition cameras that monitor weather conditions.

That PG&E 7-Day PSPS Potential forecast will provide an instantaneous sense of what's going on

and what's ahead. The forecast encompasses nine geographic regions of PG&E's service area and four levels of PSPS potential:

- **Not Expected** – Conditions that generally warrant a PSPS event are not expected at this time.
- **Elevated** – An upcoming event, typically a period of adverse weather combined with dry fuels, is being monitored for an increased potential of a PSPS event.
- **PSPS Watch** – PG&E's Emergency Operations Center is now activated based upon a reasonable chance of executing a PSPS to reduce public safety risk in a given geographic zone due to a combination of adverse weather and dry fuel conditions. A PSPS watch is typically only issued within 72 hours before the anticipated start of an event.
- **PSPS Warning** – Customers in areas being considered for a PSPS have been or are being notified. This level indicates execution of a PSPS is probable given the latest forecast of weather and fuels and/or observed conditions. PSPS is typically executed in smaller and more targeted areas than the PG&E Geographic Zones. This level does not guarantee a PSPS execution as conditions and forecasts might change.

But beyond PSPS information, weather geeks will find a lot to love about the new weather page

(www.pge.com/weather). With PG&E's weather map at your fingertips you'll be able to check humidity, precipitation, temperatures, wind speeds and wind gusts across 70,000 square miles of Northern and Central California. And you can check out those same conditions in your hometown, based on the closest weather station.

Additionally, the map shows whether the National Weather Service has called a Red Flag Warning

and where. It also offers access to the thousands of weather stations and dozens of high-definition cameras in use by PG&E. There's even a daily sunrise and sunset timetable.

No single factor drives a Public Safety Power Shutoff, as each situation is unique. PG&E carefully reviews a combination of many criteria when determining if power should be turned off for safety. These factors generally include, but are not limited to:

- A Red Flag Warning declared by the National Weather Service
- Fire Potential Outlooks from the Interagency Geographic Area Coordination Centers
- Low humidity levels, generally 20 percent and below
- Forecasted sustained winds generally above 25 mph and wind gusts in excess of approximately 45 mph, depending on location and site-specific conditions such as temperature, terrain and local climate
- Condition of dry fuel on the ground and live vegetation (moisture content)
- On-the-ground, real-time observations from PG&E's Wildfire Safety Operations Center and observations from PG&E field crews.

“By expanding our network of weather stations and cameras and offering this real-time information to our customers and agency partners, PG&E continues to grow Northern and Central California’s awareness of weather patterns and the need to initiate a Public Safety Power Shutoff when conditions merit it,” said PG&E meteorologist Scott Strenfel.

“Customers and communities need to prepare, and this weather intelligence complements the letters, community open houses, webinars, workshops, social media posts and more that we’ve used to emphasize that message,” he added.

For information about fire conditions in California, go to Cal Fire’s website, www.fire.ca.gov. For more information about the Community Wildfire Safety Program, including links to update contact information, resources for Public Safety Power Shutoffs and a schedule of upcoming regional open houses and webinars, visit PG&E’s website at www.pge.com/wild-firesafety.

Make the Connection Find Out More



[City Calendar/Events](#)
[Community Center](#)
[Belmont Public Library](#)



[Volunteer Opportunities](#)
[Employment Opportunities](#)



[E-Notification Sign-up](#)



[Connect via Social Media](#)

[Community Alert System](#)

